

# SPSS: Frequency polygon (nom/ord) (via Chart builder)

---

This document will explain how to generate a Frequency polygon for a nominal or ordinal variable using SPSS using the Chart Builder as shown below.

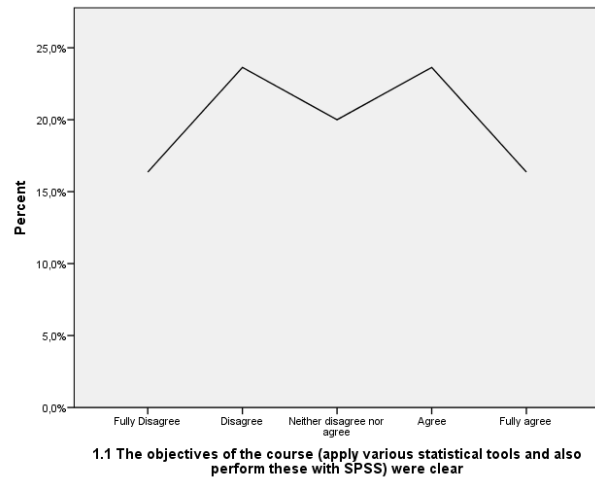


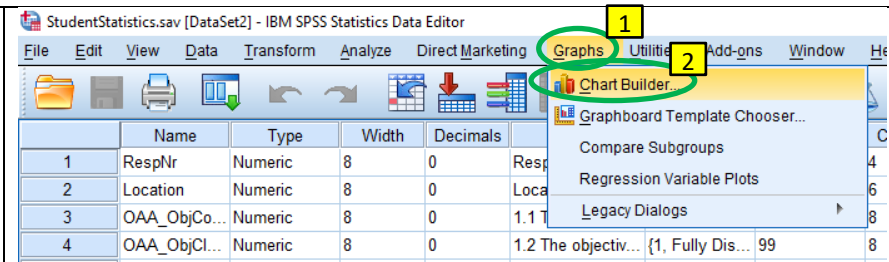
Figure 1. Example Frequency polygon generated with SPSS

The described steps are also shown in the Youtube video at: [https://youtu.be/6\\_Us7nU9XTE](https://youtu.be/6_Us7nU9XTE).

The example file used is *StudentStatistics.sav* available on the companion website <http://PeterStatistics.com>.

## Frequency polygon

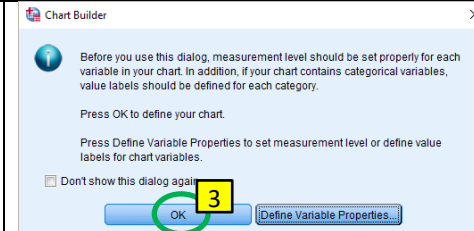
1. Click in the menubar on **Graphs**
2. Click on **Chart Builder...**




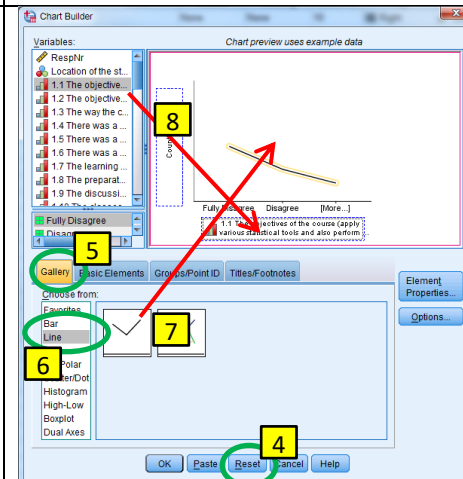
You'll probably get a warning about measurement levels. If you have not set those correct in the Variable View, you might want to do so first.

3. Click on **OK**


*Optional:* You can also tick the option ☐ **Don't show this dialog again**, to prevent this message in the future.



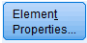
4. Click on **Reset**
5. Click on the tab **Gallery**
6. Click on the category 'Line'
7. **Drag** the 'Simple Line'  to the preview area
8. **Drag** the variable of which you want the frequency polygon to **X-Axis?**



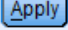
*Optional:* Follow the steps below if you want to show percentages instead of absolute frequencies.

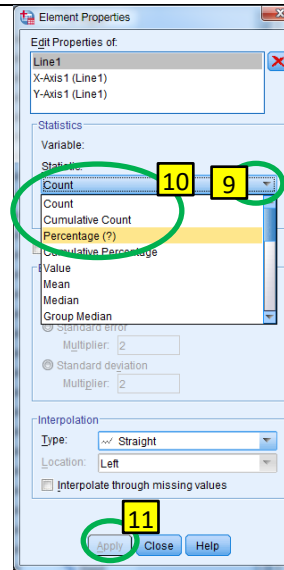
- In the **Element Properties** screen, click on the pull down button at Statistic  (next to 'Count')

*Note:*

If you do not see the *Element Properties* screen, click on 

- Click on *Percentage(?)* for percentages.

- Click on 



- Click on 